



HALLOWEEN KILL SWITCH™

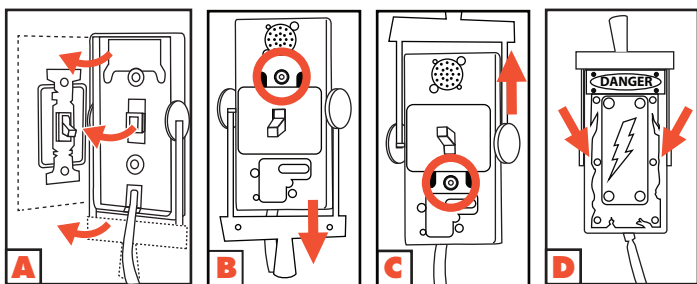
*****IMPORTANT***** Always turn off power on the electrical circuit breaker to your switch while performing setup outlined below! **DANGER!** Electric shock could result if power is not shut off during installation. Also, make sure to thoroughly test the item with your switch to ensure it is functioning well and safely. If item does not function well or properly, do not use this item with your switch. **SAFETY FIRST!**

INSTALLATION INSTRUCTIONS

ALWAYS TURN OFF POWER ON THE ELECTRICAL CIRCUIT BREAKER TO YOUR SWITCH WHILE PERFORMING SETUP.

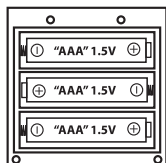
- Carefully remove and discard packaging.
- Insert 3 brand new "AAA" alkaline batteries into the battery compartment located on back of the KILL SWITCH™.
- Using a screwdriver, remove the two screws securing your existing light switch plate. Set your existing plate aside exposing the switch.
- Remove the KILL SWITCH™ face plate and place the KILL SWITCH™ over your light switch with the handle in the down position. Line up and insert the switch into the back cover. **(See Illustration A)**
- Insert and tighten the screw in the exposed top hole securing the cover over the switch. **(See Illustration B)**
- Move the handle of the KILL SWITCH™ into the up position exposing the bottom hole. Insert and tighten the screw securing the KILL SWITCH™ to the wall. **(See Illustration C)**
- Replace the KILL SWITCH™ face plate over the KILL SWITCH™ assembly by sliding it into place. **(See Illustration D)**
- Turn power on electrical circuit breaker back on.
- Flip the handle to operate the lights in your room and enjoy scary lights and sounds!

SURFACE WASHABLE ONLY. ALL NEW MATERIALS: PLASTIC.



BATTERY INSTRUCTIONS & CAUTIONS

- Battery installation and removal should be performed by an adult.
- Remove batteries when not in use.
- Use only batteries recommended in the instructions.
- Do not mix new and used batteries.
- Do not mix alkaline, carbon-zinc, nickel-cadmium, rechargeable or different types of batteries.
- Be mindful to insert batteries with the correct polarity (+/-) as indicated.
- Remove all exhausted batteries.
- Rechargeable batteries are only to be charged under adult supervision.
- Rechargeable batteries are to be removed from the item before being charged.
- Non-rechargeable batteries are not to be recharged.
- The supply terminals are not to be short-circuited.
- Always dispose of exhausted batteries properly.
- Do NOT dispose of batteries in fire, they may leak or explode.



3AAA

3 "AAA" BATTERIES REQUIRED
Batteries included for "Try Me" demo purposes only

TekkyDesign.com

Item #58694.
KILL SWITCH™
is a trademark of Tekky.
Copyright © 2020 Tekky.
All Rights Reserved.
MADE IN CHINA
Manufactured for and
distributed by:
Tekky, Orland Park, IL
60467 USA

tracking code

