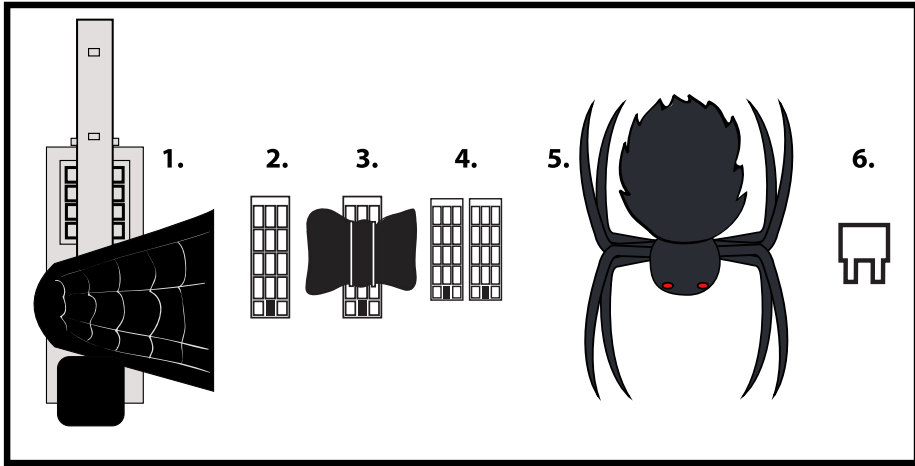


ATTACK SPIDER

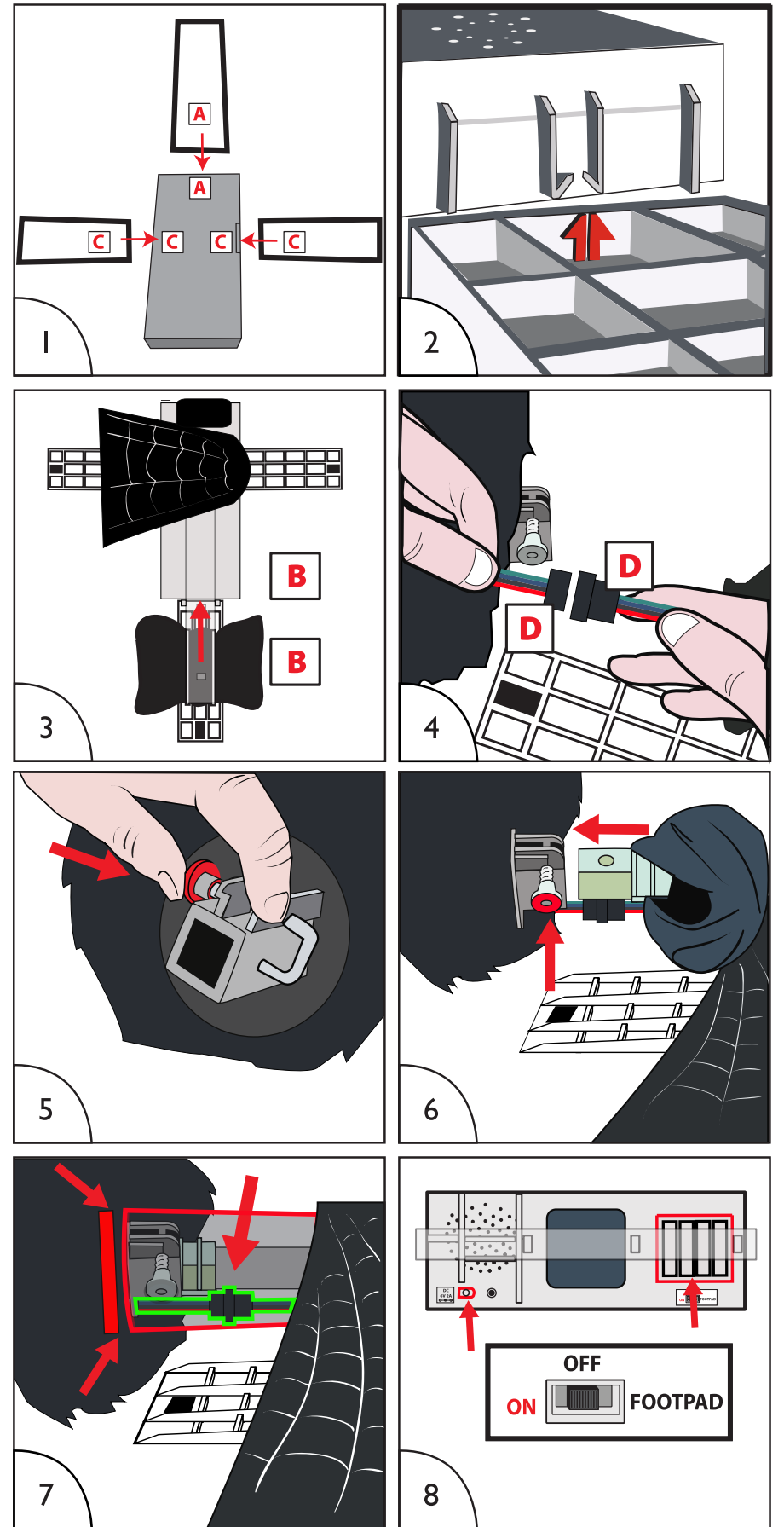
INSTALLATION AND OPERATING INSTRUCTIONS

KEEP ALL PLASTIC AND WIRE PARTS AWAY FROM CHILDREN

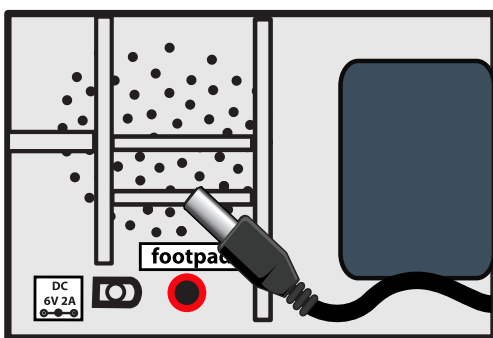


- PARTS**
1. MODULE
 2. FRONT FOOT
 3. BACK FOOT WITH WEIGHT
 4. SIDE FEET
 5. SPIDER
 6. FOOT REMOVAL KEY

1. Insert FRONT FOOT AND SIDE FEET into the bottom of MODULE. (Match A to A) (Match C to C) Snap to lock.
2. IMPORTANT: Press to make sure each FOOT is flush with MODULE. To remove FOOT, insert plastic PLASTIC FOOT REMOVAL KEY (included) into holes on bottom to release locks, twist and pull.
3. Insert BACK FOOT WITH WEIGHT into the bottom of the MODULE. (Match B to B) To avoid damage do not pick item up while BACK FOOT is attached.
4. Insert wire from SPIDER into wire coming from MODULE. (Match D to D)
5. Push in circular locking pin located on the SPIDER.
6. Insert pole from MODULE and release locking pin when the SPIDER is seated firmly on the pole.
7. Place black fabric bag with elastic ring located on the MODULE pole and place it over the circular ring located on the SPIDER locking pin. IMPORTANT: Wire running from the SPIDER must be fully enclosed inside the black fabric bag.
8. Connect ADAPTER, or insert 4 AA alkaline batteries (not included) into the battery compartment located on the MODULE. Turn the switch to the ON position to operate in Sound or Motion activation mode. Make a loud sound (clap), or move in front of the item to activate. Turn item OFF when not in use.
9. Attach hook and loop fastener located underneath the spider web fabric to fasteners located on FEET.



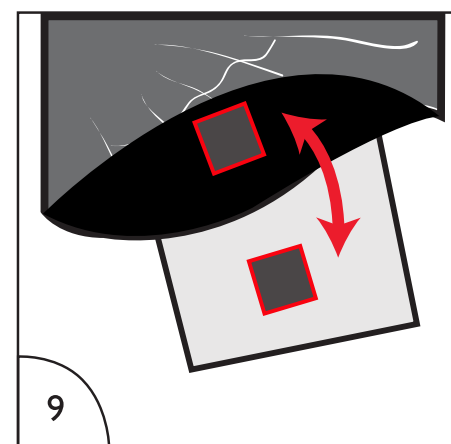
Optional Footpad Setup



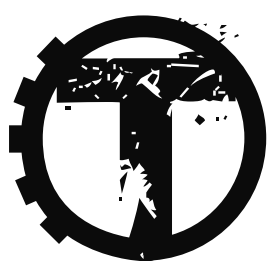
Follow steps #1 through 8 on initial installation first.

1. Connect the cable from the optional footpad to the jack labeled FOOTPAD located on the MODULE.
2. Place the switch on the MODULE into the 'FOOTPAD' position to enable FOOTPAD activation.
3. Step on FOOTPAD to activate the scary sequence. (go to instruction #9 to continue setup)

*Footpads are sold separately and can be purchased at www.tekkyaccessories.com



FOR FOOTPADS, ADAPTERS, AND ALL OTHER ACCESSORIES, PLEASE VISIT: www.tekkyaccessories.com



TEKKY
www.tekkydesign.com

Surface Washable Only.
ALL NEW MATERIALS:
PLASTIC, POLYESTER FIBERS

Requires 4 'AA' Batteries (Not included)
or 6V 2A DC adapter (included)

ATTACK SPIDER is a trademark of Tekky.
Copyright © 2016 Tekky.
All Rights Reserved.
MADE IN CHINA

Outdoor Warning

For best overall performance, we recommend you operate your item in a sheltered outdoor area. We also recommend you bring your item indoors during adverse weather conditions (extreme cold, strong winds and/or rain). This item operates best outdoors in temperatures above freezing (32°F).

Battery Instructions and Cautions

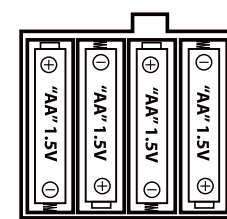
- Use only the batteries recommended by the manufacturer. • Remove batteries when not in use.
- Do NOT use rechargeable batteries. • Be sure to insert the batteries with the correct polarity +/-.
- Never mix different types of batteries: old and new, carbon-zinc, alkaline, nickel-cadmium or rechargeable.
- Always dispose of exhausted batteries properly. Do NOT dispose of batteries in fire, they may leak or explode. ADULT SUPERVISION RECOMMENDED WHEN CHANGING BATTERIES.

Warning! This item is not a toy. For decoration only. Small parts, choking hazard.
This product is intended for use by persons 15 years of age and older.
Not intended for use by children ages 14 and under.

WARNING

DO NOT TURN ITEM ON UNTIL YOU HAVE COMPLETELY FINISHED ASSEMBLY. STAY CLEAR OF ITEM WHILE OPERATING. DO NOT PLACE ITEM ON UNEVEN GROUND. DO NOT PLACE WEIGHT ON ITEM WHILE IN OPERATION

Battery Diagram



SMART PHONE SCAN SETUP VIDEO



DO NOT RETURN THIS ITEM TO THE STORE!
If experiencing technical difficulties, please go to tekkydesign.com for assistance.