

ESCAPE FROM THE GRAVE ZOMBIE™

INSTALLATION AND OPERATING INSTRUCTIONS

KEEP ALL PLASTIC AND WIRE PARTS AWAY FROM CHILDREN

Setup Instructions: Escape from the Grave Zombie

PARTS:

1. Head with clothes (includes arms with hands)
2. Base
3. Yard Stake (2)

- 1.) Insert "L" shaped arm labeled A located inside HEAD WITH CLOTHES into arm receptacle located on BASE. (Align A to A)

NOTE: Align the snap-locks with the snap-holes and press firmly until locked in place.

- 2.) Insert "L" shaped arm labeled B located inside HEAD WITH CLOTHES into arm receptacle located on BASE. (Align B to B)

NOTE: Align the snap-locks with the snap-holes and press firmly until locked in place.

- 3.) Insert snap-lock under neck into receptacle located on BASE. (Align C to C)

- 4.) Snap connect all wiring.

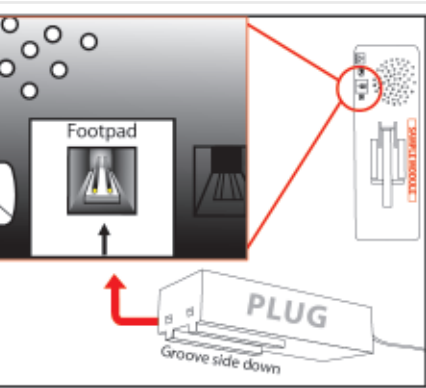
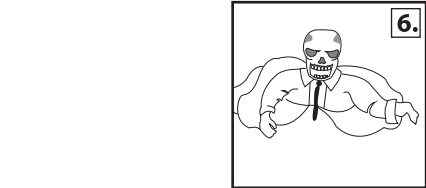
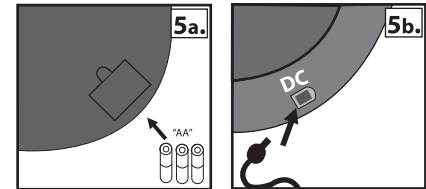
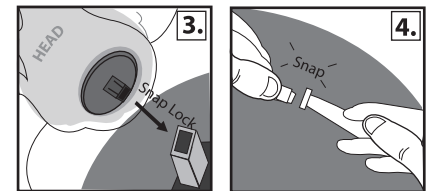
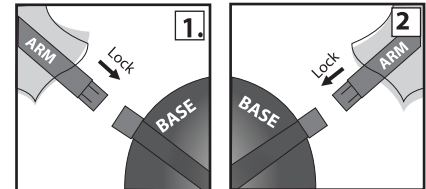
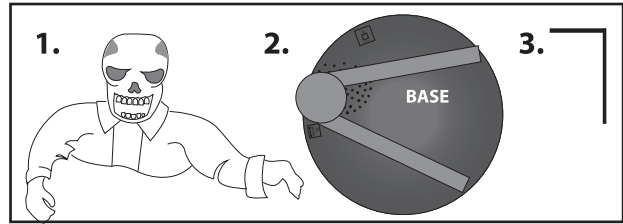
- 5.) Insert 3 AA batteries into the battery compartment located on the module or connect DC adapter. (sold separately)

NOTE: Turn switch on top of BASE to ON to operate in Timer/Sound mode (Zombie will function with 1.5 minute breaks between cycles in battery operated mode - or, clap during 1.5 minute break to instantly start Zombie playing again). In DC adapter operated mode, Zombie will operate continuously. Leave switch in the OFF position when not in use.

- 6.) Spread out clothes as shown and position arms as desired.

(make sure there are no obstructions to hinder the upper body movement)

NOTE: Use the L-shaped YARD STAKE for sheltered outdoor use. First, detach bottom of BASE from top of BASE. Insert L-shaped YARD STAKE through bottom of BASE into soft ground prior to installation steps. Attach TOP of BASE to bottom of BASE after YARD STAKE is inserted.



Optional Footpad Setup

Follow Steps 1 through 5 on initial installation first.

1. Connect wire from the optional footpad to the jack labeled FOOTPAD located on the base.
2. Place the switch on the base into the 'FOOTPAD' position to enable FOOTPAD activation.
3. Step on FOOTPAD to activate the scary sequence. (go to instruction #6 to continue setup)

NOTE:

When plugging in, make sure pins line up properly with holes on plug. Align plug, groove side down, with the notch.

CAUTION!

Not aligning the plug to jack properly may cause permanent damage to Foot Pad jack of your item. Do not use excessive force when inserting plug.

*Footpads are sold separately and can be purchased at www.tekkytoys.com

Outdoor Warnings: For best overall performance, we recommend you operate your item in a sheltered outdoor area. We also recommend you bring your item indoors during adverse weather (extreme cold, strong winds and/or rain). This item operates best outdoors in temperatures above freezing (32°F). Tekky Toys recommends using fresh alkaline batteries for best operating performance.

If you hear a constant "clicking" sound and this item does not function properly, it means that there is an obstruction preventing the item from operating (for example: rock, bush, incline, etc.). The clicking sound does not mean that it is broken, just remove any obstruction and the item should function normally.

****No weight should be placed onto item****

Warning! This item is not a toy. For decoration only. Small parts, choking hazard.
This product is intended for use by persons 15 years of age and older.
Not intended for use by children ages 14 years and younger.

WARNING
DO NOT TURN THIS ITEM ON UNTIL YOU HAVE COMPLETELY FINISHED ASSEMBLY.
 Stay clear of item while operating.

Requires 3 'AA' Batteries
 or optional DC Adapter (4.5V 1.5A DC Adapter)
 Surface washable only.
 ALL NEW MATERIALS:
 PLASTIC, POLYESTER,
 POLYESTER FIBER

ESCAPE FROM THE GRAVE ZOMBIE
 trademarks of Tekky Toys.
 Copyright © 2007 Tekky Toys.
 All Rights Reserved.



DO NOT RETURN THIS ITEM TO THE STORE!
 If experiencing technical difficulties, please go to
www.tekkytoys.com for assistance.



visit us:
www.tekkytoys.com