

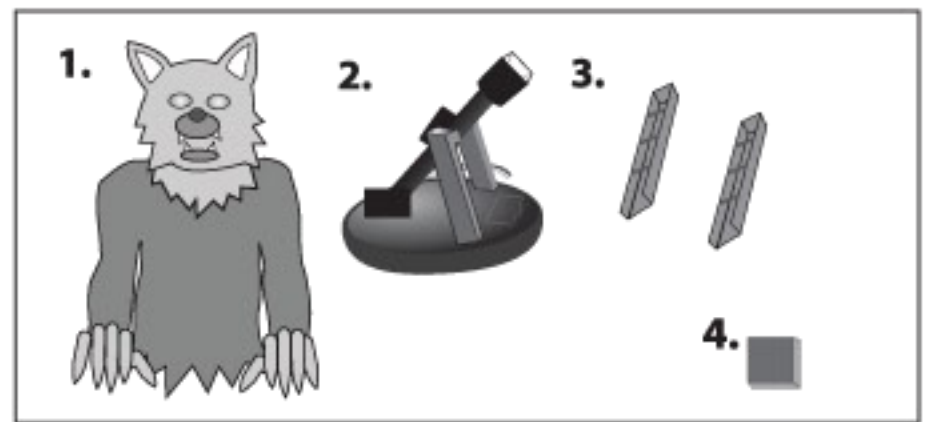
# THE HOWLER

## INSTALLATION AND OPERATING INSTRUCTIONS KEEP ALL PLASTIC AND WIRE PARTS AWAY FROM CHILDREN

### Set up instructions THE HOWLER

#### Parts (5):

1. Head with Clothes
2. Telescoping Module/Base
3. Feet (2) (*hands attached*)
4. Adapter



#### 1.) Snap lock Head with Clothes to Telescoping Module/Base.

(Matching A to A) Press until it clicks into place.

#### 2.) Connect cable coming from under clothes to cable coming from Module/Base. (Matching B to B)

#### 3.) Attach both Feet to under side of Base. (Matching C to C)

Make sure Feet are flush with Base.

**Note:** Feet are pre-mounted to Howler's hands.

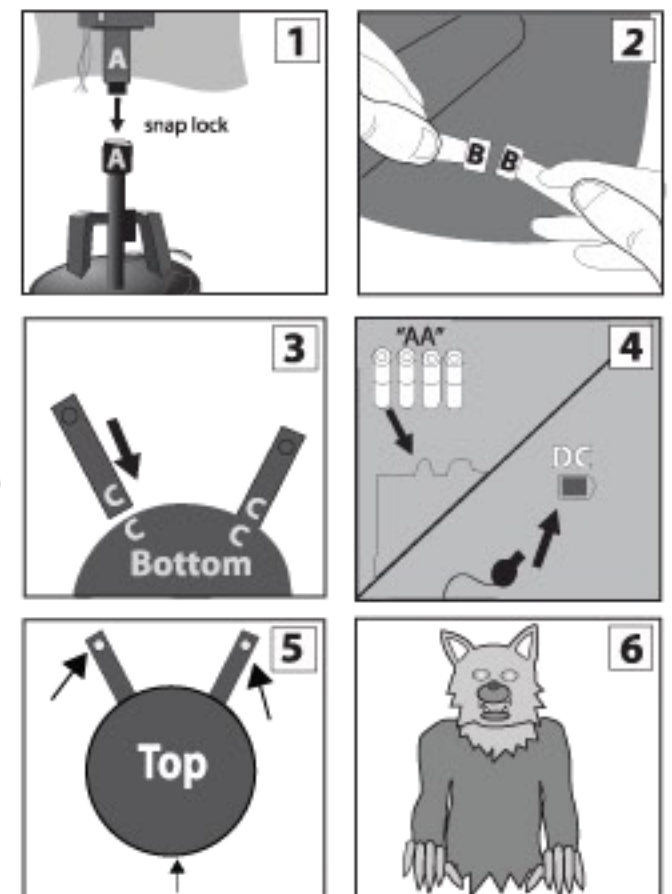
#### 4.) Insert 4 brand new AA batteries (not included) into battery compartment located on Module or attach 6V 3A DC adapter (included).

**Note:** Turn switch on MODULE to ON to operate in Timer /Sound activation mode (Clap during 1.5 minute breaks to instantly start item playing again). Turn item OFF when not in use.

#### 5.) Attach hook and loop fasteners under clothing to opposite fasteners on the top of front feet and back of module.

#### 6.) Pull clothes down and fully cover Base as shown.

Make sure to place Howler on level ground to ensure best operation.  
Keep area around Howler clear of obstructions that may hinder movement.



### Optional Footpad Setup

Follow Steps 1 through 4 on initial installation first.

1. Connect wire from the optional footpad to the jack labeled FOOTPAD located on the base.
2. Place the switch on the base into the 'FOOTPAD' position to enable FOOTPAD activation.
3. Step on FOOTPAD to activate the scary sequence. (*go to step #5 to continue setup*)

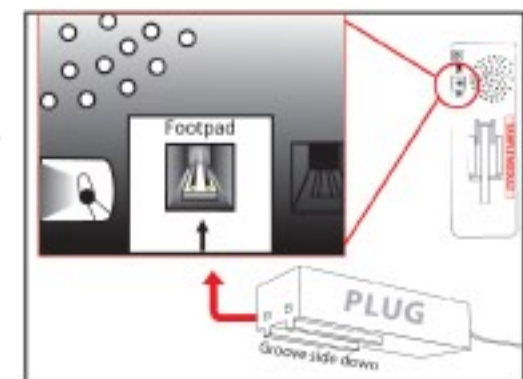
#### NOTE:

When plugging in, make sure pins line up properly with holes on plug.  
Align plug, groove side down, with the notch.

#### CAUTION!

Not aligning the plug to jack properly may cause permanent damage Footpad jack of your item. Do not use excessive force when inserting plug.

\*Footpads are sold separately and can be purchased in Spirit Halloween stores or online at: [www.spirithalloween.com](http://www.spirithalloween.com)



**Outdoor Warnings:** For best overall performance, we recommend you operate your item in a sheltered outdoor area. We also recommend you bring your item indoors during adverse weather (extreme cold, strong winds and/or rain). This item operates best outdoors in temperatures above freezing (32°F). Tekky Toys recommends using fresh alkaline batteries for best operating performance.



VISIT US: [WWW.TEKKYTOYS.COM](http://WWW.TEKKYTOYS.COM)

Surface Washable Only.  
ALL NEW MATERIALS : PLASTIC, POLYESTER,  
POLYESTER FIBER

Battery Powered:  
Requires 4 AA Batteries (not included)  
DC Adapter Ready 6V 3A (included)  
\*\* Footpad sold separately and can  
be purchased at: [www.spirithalloween.com](http://www.spirithalloween.com)

The Howler is a trademark of Tekky Toys.  
Copyright © 2012 Tekky Toys.  
All Rights Reserved.  
MADE IN CHINA

### SMART PHONE SCAN

SETUP VIDEO



**\*\*No weight should be placed onto item\*\***

**Warning!** This item is not a toy. For decoration only. Small parts, choking hazard.  
This product is intended for use by persons 15 years of age and older.  
Not intended for use by children ages 14 years and younger.

#### WARNING

**DO NOT TURN THIS ITEM ON UNTIL YOU HAVE COMPLETELY FINISHED ASSEMBLY.**  
Stay clear of item while operating.

