

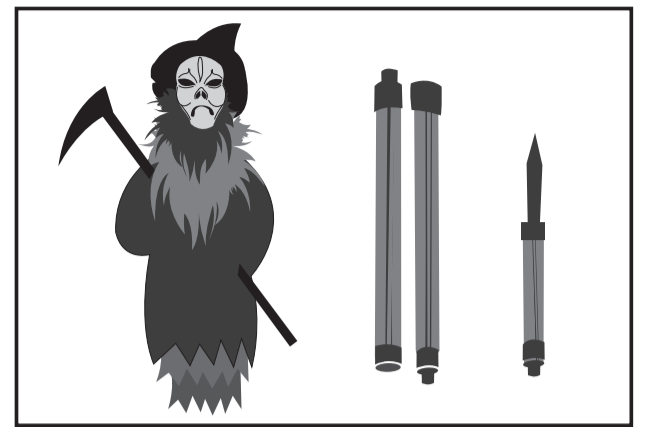
INSTALLATION AND OPERATING INSTRUCTIONS

KEEP ALL PLASTIC AND WIRE PARTS AWAY FROM CHILDREN

Setup Instructions: Harvester

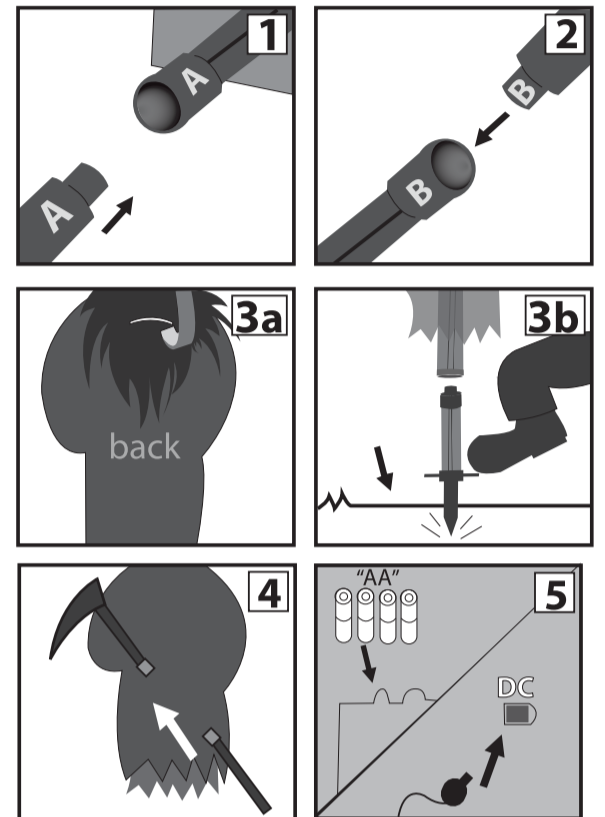
PARTS:

1. Head with Body and module
2. Pole (2)
3. Yard Stake



- 1.) **Insert male end of pole into module and twist to lock.**
(Match A to A)
- 2.) **Insert male end of second pole into female end of pole A, and twist to lock.**
(Match B to B)
- 3.) **Hanging Display - For hanging use, using metal loop on back of body, hang door hanger or other hanging device and display where desired.**
(hanging device not included) See illustration 3a.

Yard Display - For staked use, insert Pole with Yard Stake end into soft ground. Then attach poles together and twist to lock.
(Match C to C) See illustration 3b.
- 4.) **Connect Scythe's upper pole to lower pole and twist to lock.**
See illustration 4.
- 5.) **Insert 4 brand new AA batteries into battery compartment located on MODULE under Harvester's head, or attach optional 6V 2A DC adapter (sold separately).**
See illustration 5.



Note: Turn switch to the ON position to operate in Sound or Motion activation mode. Make a loud sound (clap) or move in front of the item to activate. Turn item OFF when not in use.

Optional Footpad Setup

Follow Steps 1 through 5 on initial installation first.

1. Connect wire from the optional footpad to the jack labeled FOOTPAD located on the base.
2. Place the switch on the base into the 'FOOTPAD' position to enable FOOTPAD activation.
3. Step on FOOTPAD to activate the scary sequence.

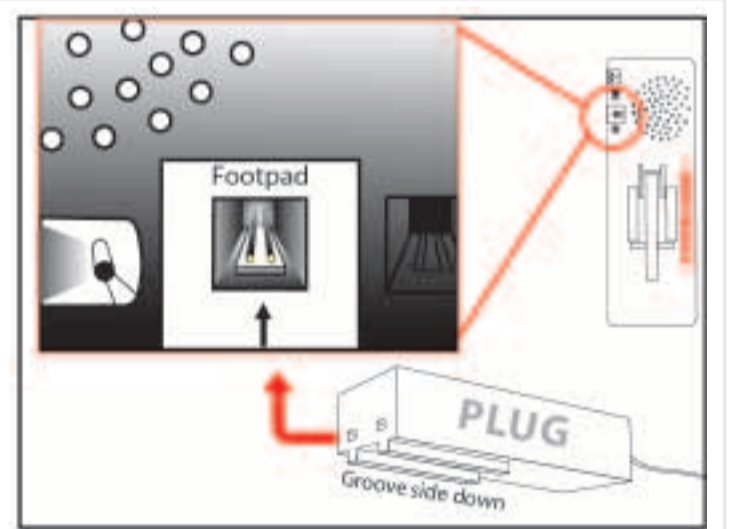
NOTE:

When plugging in, make sure pins line up properly with holes on plug. Align plug, groove side down, with the notch.

CAUTION!

Not aligning the plug to jack properly may cause permanent damage to Foot Pad jack of your item. Do not use excessive force when inserting plug.

*Footpads are sold separately and can be purchased at www.tekkytoys.com



Outdoor Warnings: For best overall performance, we recommend you operate your item in a sheltered outdoor area. We also recommend you bring your item indoors during adverse weather (extreme cold, strong winds and/or rain). This item operates best outdoors in temperatures above freezing (32°F). Tekky Toys recommends using fresh alkaline batteries for best operating performance.



visit us: tekkytoys.com

Requires 4'AA' Batteries or optional DC Adapter (6V 2A)
Surface washable only.
ALL NEW MATERIALS:
PLASTIC, POLYESTER,
POLYESTER FIBER

THE HARVESTER
is trademark of Tekky Toys.
Copyright © 2011 Tekky Toys.
All Rights Reserved.

SMART PHONE SCAN SETUP VIDEO



****No weight should be placed onto item****

Warning! This item is not a toy. For decoration only. Small parts, choking hazard.
This product is intended for use by persons 15 years of age and older.
Not intended for use by children ages 14 years and younger.

WARNING
DO NOT TURN THIS ITEM ON UNTIL YOU HAVE COMPLETELY FINISHED ASSEMBLY.
Stay clear of item while operating.



DO NOT RETURN THIS ITEM TO THE STORE!
If experiencing technical difficulties, please go to
www.tekkytoys.com for assistance.

