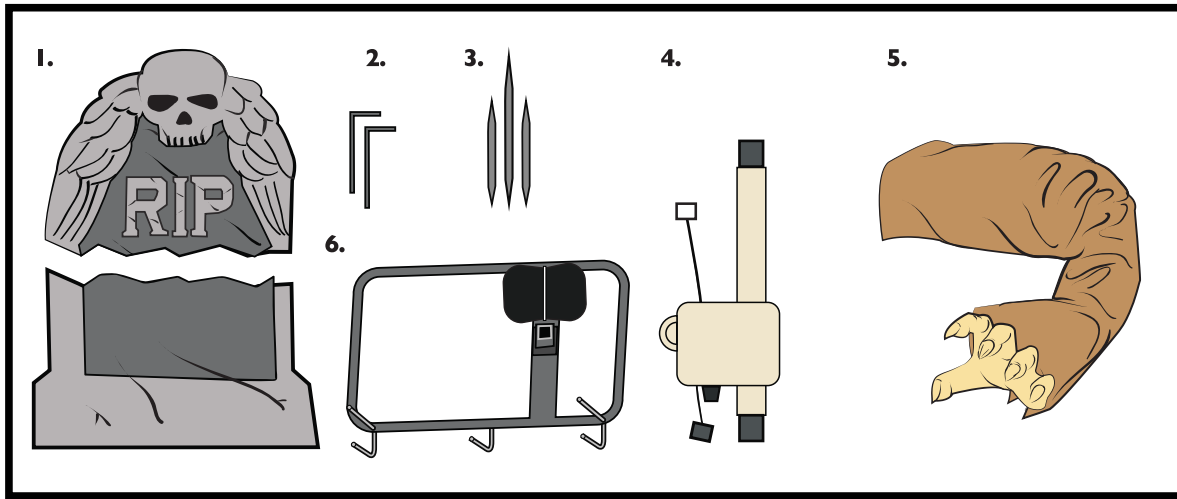


REACHING ARM TOMBSTONE

INSTALLATION AND OPERATING INSTRUCTIONS

KEEP ALL PLASTIC AND WIRE PARTS AWAY FROM CHILDREN



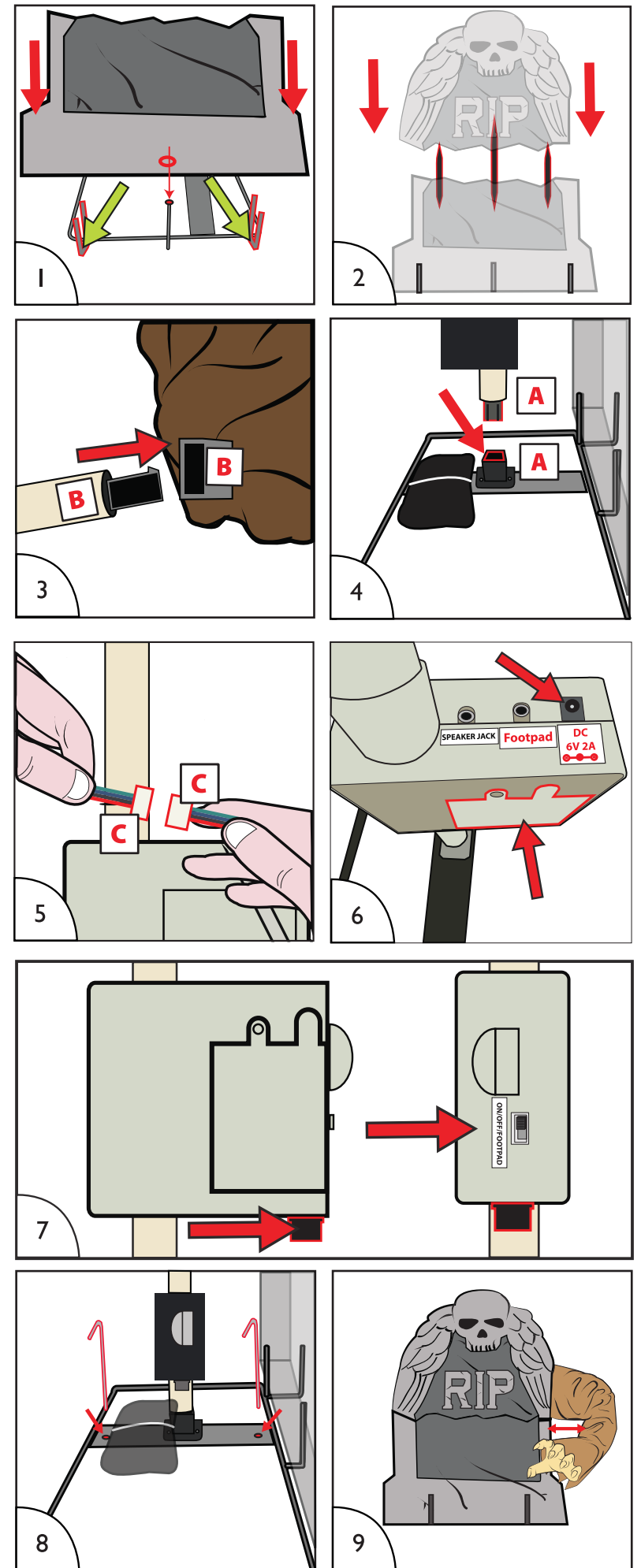
PARTS

1. TOMBSTONE (TOP AND BOTTOM)
2. GROUND STAKES (2)
3. TOMBSTONE SPIKES (3)
4. MODULE
5. REACHING ARM
6. METAL STAND

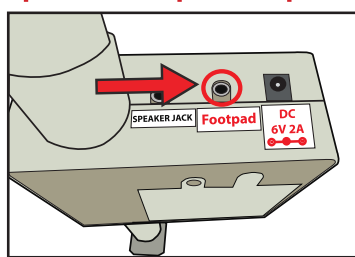
SMART PHONE SCAN SETUP VIDEO



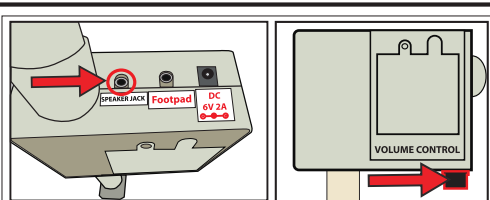
1. Place TOMBSTONE BOTTOM on the METAL STAND. Line up the pre-drilled hole in the bottom of the TOMBSTONE up with the center post and gently push down until TOMBSTONE rests between the two outer brackets.
2. Insert 3 TOMBSTONE SPIKES into pre drilled holes in top half of TOMBSTONE, placing the long spike in the center, and attach top half of TOMBSTONE to bottom half of TOMBSTONE.
3. Insert top of MODULE pole into bottom of REACHING ARM. (Match B to B)
4. Insert REACHING ARM and MODULE into METAL BASE. MODULE pole is secure when snap lock clicks into post on base. (Match A to A)
5. Connect wire from REACHING ARM to MODULE. (Match C to C)
6. Connect 6V2A ADAPTER (not included) or insert 4 AA alkaline batteries into the battery compartment located on the MODULE.
7. Turn switch on control box to ON to operate in Sound activation mode. Adjust volume control knob as needed. Make a loud sound (clap) to activate. Leave switch in OFF position when not in use.
8. For outdoor setup, insert GROUND STAKES into holes in the METAL STAND. The METAL STAND is secure when GROUND STAKES are inserted fully into the ground.
9. Position Reaching Arm Tombstone with room for the item to activate and the arm to move freely. Upon activation make sure there is enough space between the TOMBSTONE and the inside of the arm to prevent damage to TOMBSTONE. Re-position TOMBSTONE if needed to create space.



Optional Footpad Setup



- Follow steps #1 through 6 on initial installation first.
1. Connect the cable from the optional footpad to the jack labeled FOOTPAD located on the MODULE.
 2. Place the switch on the MODULE into the 'FOOTPAD' position to enable FOOTPAD activation.
 3. Step on FOOTPAD to activate the scary sequence. (go to instruction #7 to continue setup)
- *Footpads are sold separately and can be purchased at www.tekkyaccessories.com



Optional External Speaker Setup Instructions

- EXTERNAL SPEAKER IS NOT INCLUDED. MUST BE PURCHASED SEPARATELY.**
1. Plug speaker cord into the jack labeled SPEAKER JACK located on top of the base.
 2. Use volume knob on external speaker to control volume levels.

FOR FOOTPADS, ADAPTERS, AND ALL OTHER ACCESSORIES, PLEASE VISIT:
www.tekkyaccessories.com



www.tekkydesign.com

Surface Washable Only.

ALL NEW MATERIALS :
POLYESTER FIBERS, POLYURETHANE FOAM,
POLYSTYRENE FOAM, SAND

Requires 4 'AA' Batteries (Not included)
or 6V 2A DC adapter (included)

REACHING ARM TOMBSTONE is a trademark of Tekky.
Copyright © 2016 Tekky. All Rights Reserved. **MADE IN CHINA**

Outdoor Warning

For best overall performance, we recommend you operate your item in a sheltered outdoor area. We also recommend you bring your item indoors during adverse weather conditions (extreme cold, strong winds and/or rain). This item operates best outdoors in temperatures above freezing (32°F).

Battery Instructions and Cautions

- Use only the batteries recommended by the manufacturer. • Remove batteries when not in use.
- Do NOT use rechargeable batteries. • Be sure to insert the batteries with the correct polarity +/-.
- Never mix different types of batteries: old and new, carbon-zinc, alkaline, nickel-cadmium or rechargeable.
- Always dispose of exhausted batteries properly. Do NOT dispose of batteries in fire, they may leak or explode. ADULT SUPERVISION RECOMMENDED WHEN CHANGING BATTERIES.

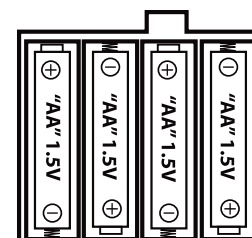
Warning!

This item is not a toy. For decoration only. Small parts, choking hazard.
This product is intended for use by persons 15 years of age and older.
Not intended for use by children ages 14 and under.

WARNING

DO NOT TURN ITEM ON UNTIL YOU HAVE COMPLETELY FINISHED ASSEMBLY. STAY CLEAR OF ITEM WHILE OPERATING. DO NOT PLACE ITEM ON UNEVEN GROUND. DO NOT PLACE WEIGHT ON ITEM WHILE IN OPERATION

Battery Diagram



DO NOT RETURN THIS ITEM TO THE STORE!
If experiencing technical difficulties, please go to tekkydesign.com for assistance.