

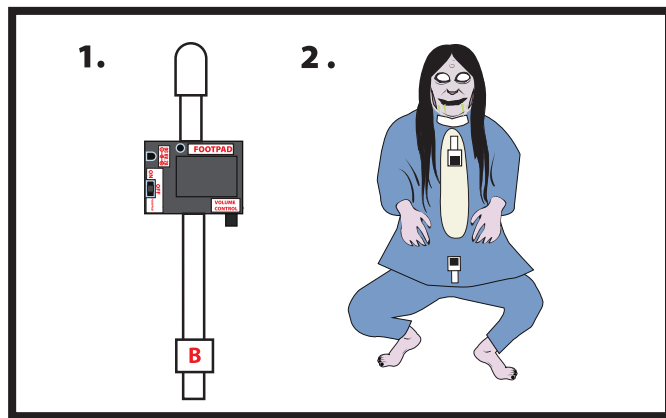
POSSESSED WALLHANGER

INSTALLATION AND OPERATING INSTRUCTIONS

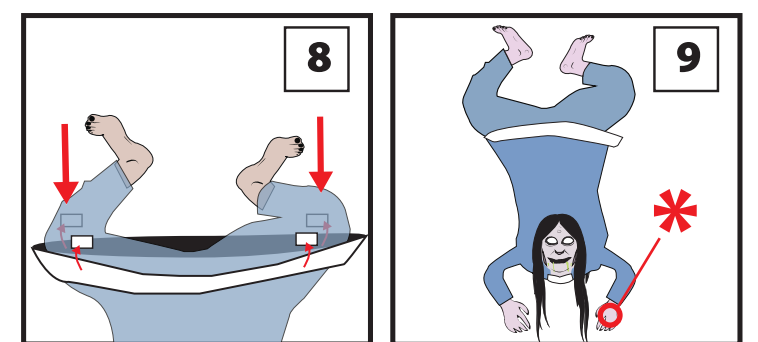
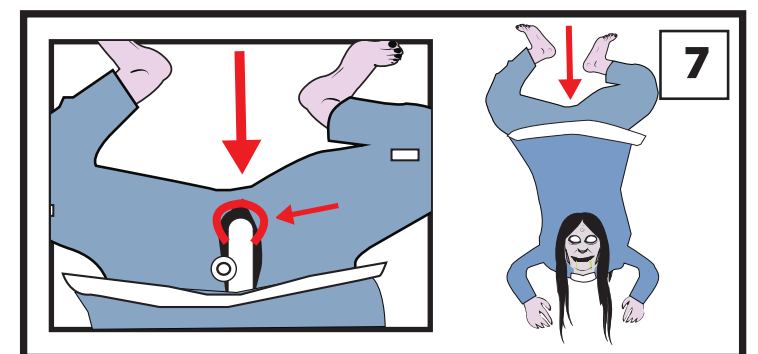
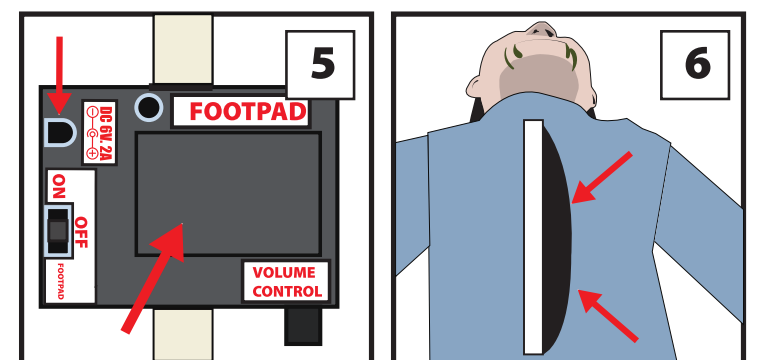
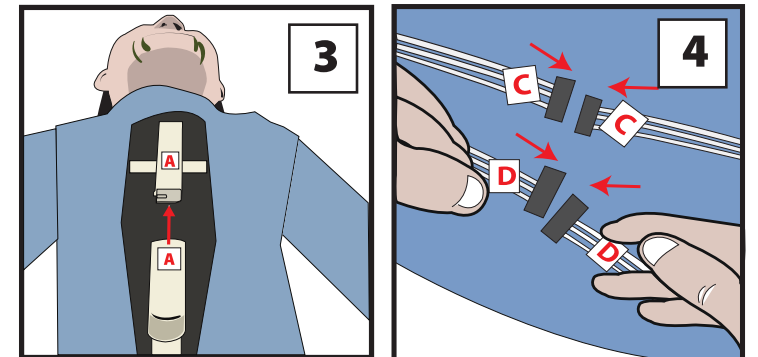
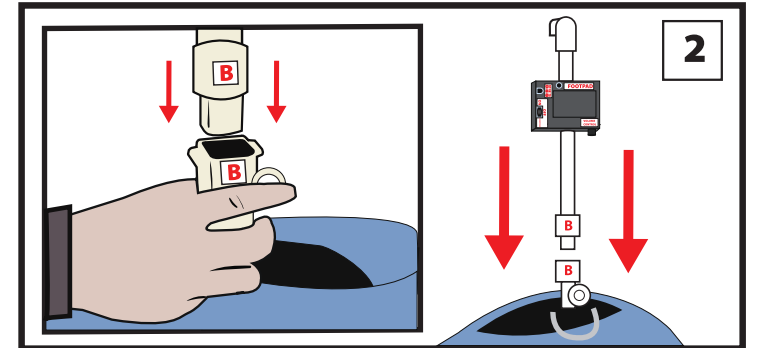
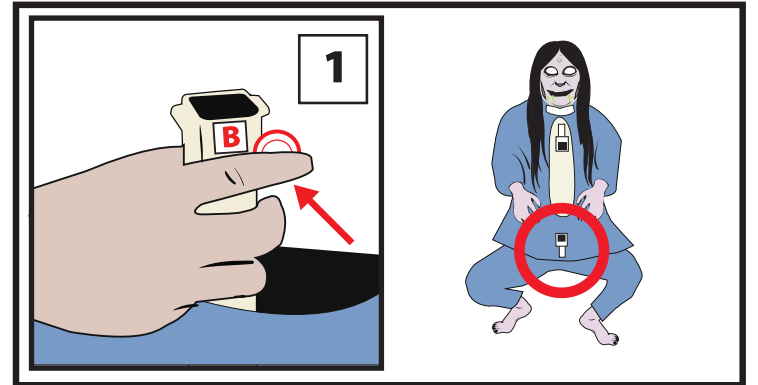
KEEP ALL PLASTIC AND WIRE PARTS AWAY FROM CHILDREN

PARTS

1. CENTER POLE
2. BODY



1. Push and hold circular locking pin on pole located in between the legs on **BODY**.
2. Insert **CENTER POLE** labeled **B** into the bottom pole on **BODY**. (**Match B to B**) Release circular locking pin.
3. Insert **CENTER POLE** labeled **A** into the top pole on **BODY**. (**Match A to A**)
4. Connect both wires located inside clothing. (**Match C to C and D to D**)
5. Connect DC adapter (sold separately) or insert 4 alkaline AA batteries in battery compartment located on **CENTER POLE**.
Turn switch on the battery compartment to ON to operate in sound and motion activation mode. Make a loud sound (clap) or move in front of the item to activate. Leave switch in OFF position when not in use.
6. Secure the hook and loop fastener on the front of the clothing closing the front of the dress.
7. Move the dress and locate the metal loop below the **CENTER POLE** inside the opening of the pants. Using the metal loop mount **POSSESSED WALLHANGER** to wall or desired location.
IMPORTANT: **POSSESSED WALLHANGER** must be mounted to a secure surface for the item to function properly.
8. Secure the dress to the legs with the hook and loop fasteners located on both sides of the legs.
9. Position the legs against wall and position hand with motion sensor facing outward.
* The back of the hand with motion sensor must be facing outward for item to function optimally.
10. Adjust sound with **VOLUME CONTROL KNOB** located on the battery compartment as needed.

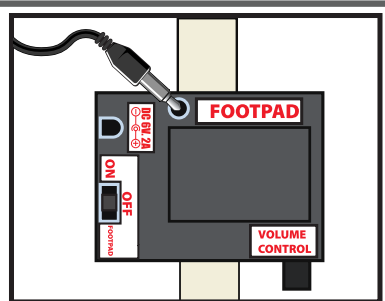


Optional Footpad Setup

Follow Steps 1 through 5 on initial installation first.

1. Connect the cable from the optional footpad to the jack labeled FOOTPAD located on the module.
2. Turn the switch on the base to the 'FOOTPAD' position to enable FOOTPAD activation.
3. Step on FOOTPAD to activate the scary sequence. (go to instruction # 6 to continue setup)

*Footpads are sold separately and can be purchased at www.tekkytoys.com



SMART PHONE SCAN SETUP VIDEO



TEKKY

VISIT US AT TEKKYTOYS.COM

Surface Washable Only.
ALL NEW MATERIALS : PLASTIC,
POLYESTER, POLYESTER FIBER

Battery Powered:
Requires 4 AA Batteries (not included)
Optional DC Adapter Ready
(6V 2A) (sold separately)
Possessed Wallhanger is a trademark
of Tekky Toys.
Copyright © 2014 Tekky Toys.
All Rights Reserved.
MADE IN CHINA



DO NOT RETURN THIS ITEM TO THE STORE!

If experiencing technical difficulties, please go to www.tekkytoys.com for assistance.

WARNING
DO NOT TURN ITEM ON UNTIL YOU HAVE COMPLETELY FINISHED ASSEMBLY.
STAY CLEAR OF ITEM WHILE OPERATING.
DO NOT MOUNT ITEM TO UNEVEN SURFACE.
DO NOT PLACE WEIGHT ON ITEM WHILE IN OPERATION

Tekky Toys Hours of Operation: Monday - Friday 9am to 5pm CST

T: 708-478-8424 E: support@tekkytoys.com

visit us: tekkytoys.com