



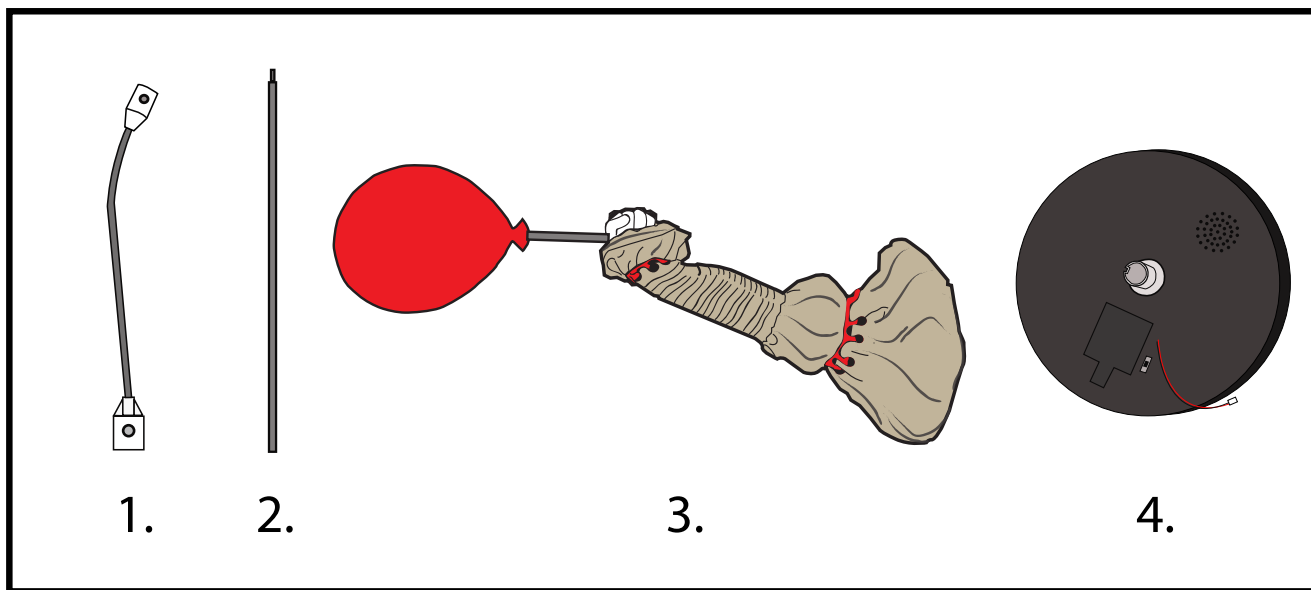
CHAPTER TWO™

IT CHAPTER 2 and all related characters and elements © &™ WBEL (s19)

FLOATING BALLOON

INSTALLATION AND OPERATING INSTRUCTIONS

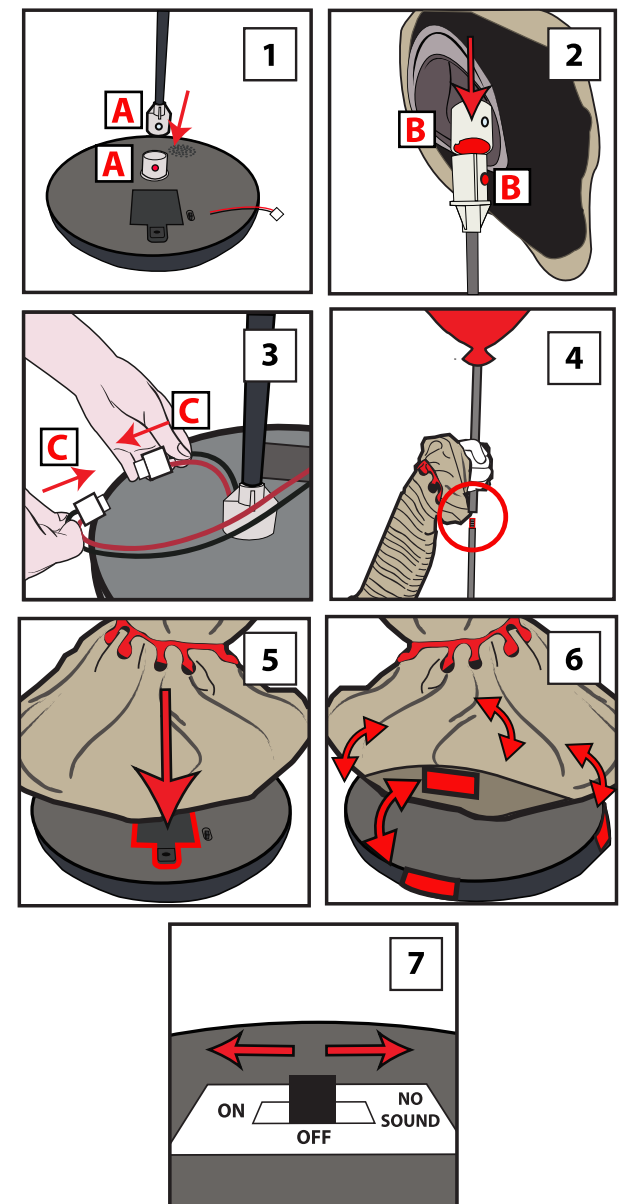
KEEP ALL PLASTIC AND WIRE PARTS AWAY FROM CHILDREN



PARTS

- 1. METAL ARM
- 2. BALLOON STEM
- 3. SLEEVE AND BALLOON
- 4. FLOATING BASE

1. Place **FLOATING BASE** on a hard flat surface. Snap lock the **METAL ARM** onto top of **FLOATING BASE**. (Match A to A) The **METAL ARM** is secure when the snap lock pin clicks in place.
2. Reach inside the **SLEEVE** and snap lock the **SLEEVE AND BALLOON** to the **METAL ARM**. (Match B to B) The **SLEEVE AND BALLOON** is secure when the snap lock pin clicks in place.
3. Connect the wire underneath the **SLEEVE AND BALLOON** to the wire located on the **FLOATING BASE**. (Match C to C)
4. Twist the **BALLOON STEM** clockwise into the **SLEEVE AND BALLOON** below the hand. Tighten securely.
5. Insert 4 AA batteries (not included) into the battery compartment located on top of the **FLOATING BASE**.
6. Attach four hook and loop fastener underneath the **SLEEVE AND BALLOON** to the four hook and loop fasteners on the **FLOATING BASE**.
7. Turn switch on top of **FLOATING BASE** the ON position (with sound) or NO SOUND (silent). Make a loud sound (clap) to activate the item. Turn the item OFF when not in use.



***NOTE:** Use **FLOATING BALLOON** on a smooth, flat surface to function optimally.

<p>Battery Diagram</p>	<p>BATTERY INSTRUCTIONS AND CAUTIONS</p> <p>Battery installation and removal should be performed by an adult. Remove batteries when not in use. Use only batteries recommended in the instructions. Do not mix new and used batteries. Do not mix alkaline, carbon-zinc, nickel-cadmium, rechargeable or different types of batteries. Be mindful to insert batteries with the correct polarity (+/-) as indicated. Remove all exhausted batteries. Rechargeable batteries are only to be charged under adult supervision. Rechargeable batteries are to be removed from the item before being charged. Non-rechargeable batteries are not to be recharged. The supply terminals are not to be short-circuited. Always dispose of exhausted batteries properly. Do NOT dispose of batteries in fire, they may leak or explode.</p>
-------------------------------	---

Warning! This item is not a toy. For decoration only. Small parts, choking hazard. This product is intended for use by persons 15 years of age and older. Not intended for use by children ages 14 years and younger.

WARNING
DO NOT TURN ITEM ON UNTIL YOU HAVE COMPLETELY FINISHED ASSEMBLY.
STAY CLEAR OF ITEM WHILE OPERATING.
DO NOT PLACE ITEM ON UNEVEN GROUND.
DO NOT PLACE WEIGHT ON ITEM WHILE IN OPERATION.
**** FOR INDOOR USE ONLY****

IT CHAPTER 2 and all related characters and elements © &™ WBEL. (s19)

Requires 4 AA batteries (not included)

ALL NEW MATERIALS:
METAL, FOAM, PLASTIC, POLYESTER

Surface washable only.
MADE IN CHINA



DO NOT RETURN THIS ITEM TO THE STORE!
If experiencing technical difficulties, please go to www.tekkydesign.com for assistance.

