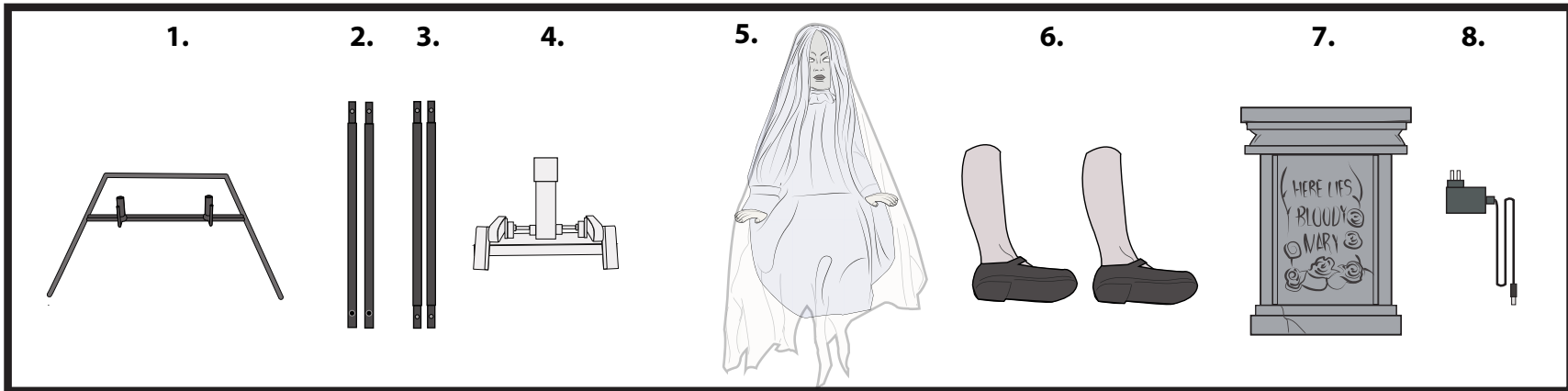


LONELY LAURA™

INSTALLATION AND OPERATING INSTRUCTIONS

KEEP ALL PLASTIC AND WIRE PARTS AWAY FROM CHILDREN

WARNING: DO NOT TURN ON THE PROP UNTIL FULLY ASSEMBLED. STAY CLEAR OF THE PROP WHILE OPERATING.



Parts:

1. STAND
2. UPPER POLES
3. LOWER POLES
4. MODULE
5. BODY
6. LEGS
7. TOMBSTONE
8. ADAPTER

1. Attach LOWER SNAP LOCK POLES to BASE. (Match A to A) Poles are secure when the snap lock pins click into posts on BASE.

2. Attach UPPER SNAP LOCK POLES to LOWER SNAP LOCK POLES assembled to BASE. (Match B to B) Poles are secure when the snap lock pins snap into place.

3. Place tombstone on metal stand. Line up pre-drilled holes on the bottom of the tombstone with metal stakes on the STAND. Firmly press the TOMBSTONE onto tops of the stakes located on the STAND.

4. Gently pull the TOMBSTONE flush against the POLES and secure MODULE to the UPPER POLES. (Match C to C)

* NOTE: The MODULE is properly secured when the metal ball snap lock is above the RED LINE on the MODULE label.

5. Snap lock both LEGS to the MODULE. (Match D to D)

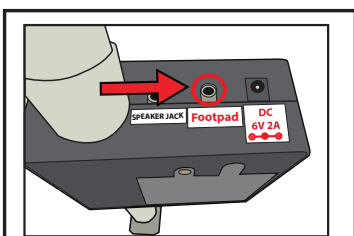
6. Snap lock the center post of the BODY into the MODULE. (Match E to E)

7. Connect wires located on the MODULE to wires located on BODY. (Match F to F)

8. Insert 6V 2A ADAPTER (included) or 4 AA batteries (not included) into the battery compartment located on the center pole of the BODY.

*NOTE: Turn switch to the ON position to operate in Sound or Motion activation mode. Make a loud sound (clap), or move in front of the item to activate. Turn item OFF when not in use.

9. Pose wire arms and fabric as seen in the photo below.



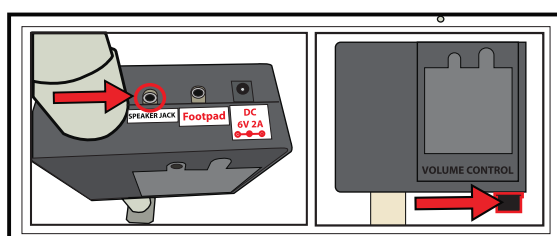
Optional Footpad Setup

Follow steps #1 through 7 on initial installation first.

1. Connect the cable from the optional footpad to the jack labeled SPEAKER JACK located on the MODULE.
2. Place the switch on the MODULE into the 'FOOTPAD' position to enable FOOTPAD activation.
3. Step on FOOTPAD to activate the scary sequence.

(go to instruction #8 to continue setup)

*Footpads are sold separately and can be purchased at www.tekkyaccessories.com

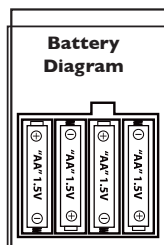


Optional External Speaker Setup Instructions

EXTERNAL SPEAKER IS NOT INCLUDED. MUST BE PURCHASED SEPARATELY.

1. Plug speaker cord into the jack labeled SPEAKER JACK located on top of the base.
2. Use volume knob on external speaker to control volume levels.

* Footpads, adapters and all other accessories are sold separately and can be purchased at www.tekkyaccessories.com



Battery Diagram

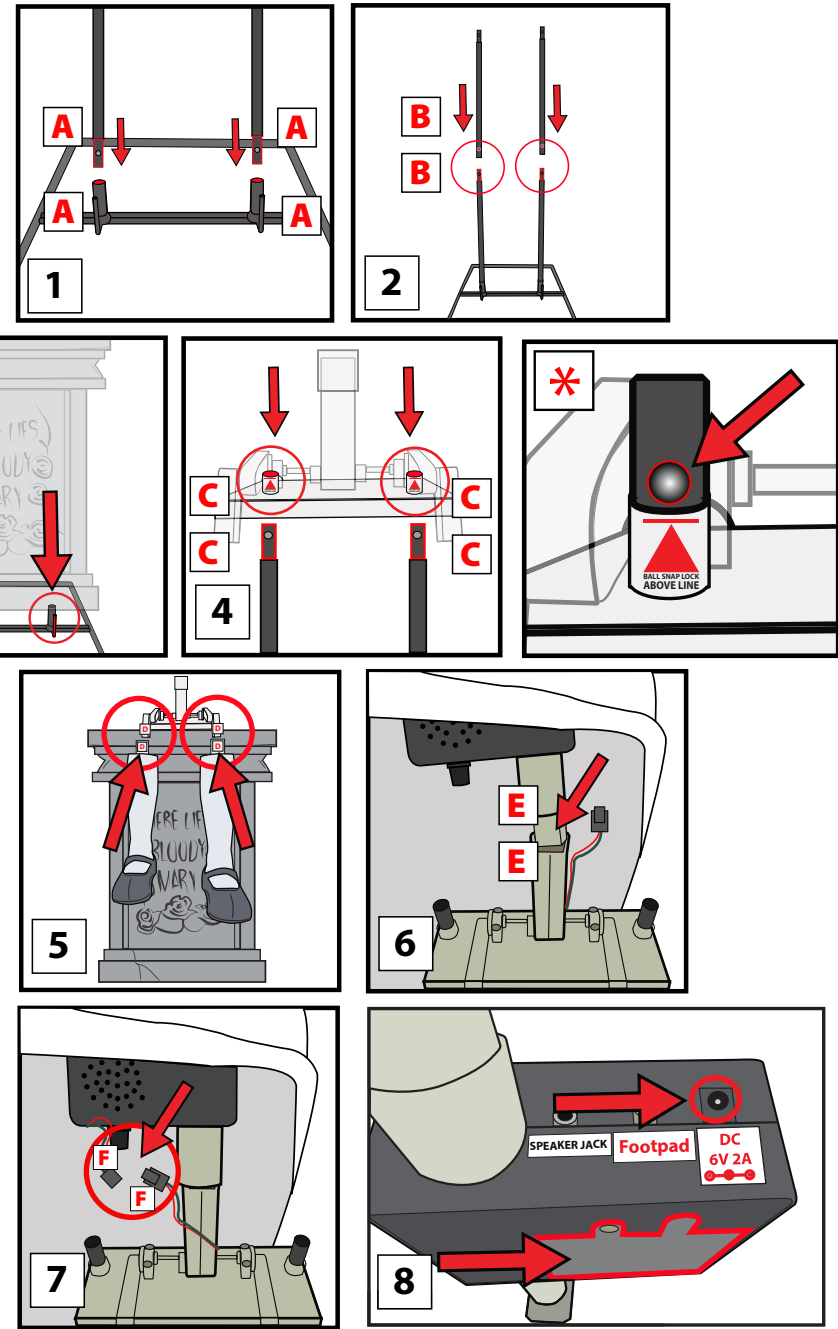
BATTERY INSTRUCTIONS AND CAUTIONS

Battery installation and removal should be performed by an adult. Remove batteries when not in use. Use only batteries recommended in the instructions. Do not mix new and used batteries. Do not mix alkaline, carbon-zinc, nickel-cadmium, rechargeable or different types of batteries. Be mindful to insert batteries with the correct polarity (+/-) as indicated. Remove all exhausted batteries. Rechargeable batteries are only to be charged under adult supervision. Rechargeable batteries are to be removed from the item before being charged. Non-rechargeable batteries are not to be recharged. The supply terminals are not to be short-circuited. Always dispose of exhausted batteries properly. Do NOT dispose of batteries in fire, they may leak or explode.

Warning! This item is not a toy. For decoration only. Small parts, choking hazard. This product is intended for use by persons 15 years of age and older. Not intended for use by children ages 14 years and younger.

WARNING

DO NOT TURN ITEM ON UNTIL YOU HAVE COMPLETELY FINISHED ASSEMBLY. STAY CLEAR OF ITEM WHILE OPERATING. DO NOT PLACE ITEM ON UNEVEN GROUND. DO NOT PLACE WEIGHT ON ITEM WHILE IN OPERATION. ** FOR INDOOR USE ONLY**



SMART PHONE SCAN SETUP VIDEO



TEKKY

visit us at tekkydesign.com

Requires 6V 2A ADAPTER (included) or 4 AA batteries (not included)

ALL NEW MATERIALS:
METAL, FOAM, PLASTIC, POLYESTER
Surface washable only.

LONELY LAURA™ is a trademark of Tekky.
Copyright © 2019 Tekky.
All Rights Reserved.
MADE IN CHINA



DO NOT RETURN THIS ITEM TO THE STORE!
If experiencing technical difficulties, please go to www.tekkydesign.com for assistance.