

# MOTION ACTIVATED WITCHES BREW™

Item #54562. WITCHES' BREW™ is a trademark of Tekky.  
Copyright © 2021 Tekky. All Rights Reserved.  
Manufactured for: Tekky, Orland Park, IL 60467 USA  
**MADE IN CHINA**

## SETTING UP WITCHES' BREW™

KEEP ALL PLASTIC AND WIRE  
PARTS AWAY FROM CHILDREN

1. Use a small Phillips/crosshead screwdriver to remove the (2) screws that release the battery compartment located on bottom of the WITCHES' BREW™. Pull, to slide battery compartment out for access to batteries. See Fig. 1
2. Remove screw on battery compartment and insert (3) brand new "AA" alkaline batteries into the battery compartment. Replace screw and re-insert battery compartment into the bottom of WITCHES' BREW™. Replace (2) screws that secure battery compartment to bottom of item.
3. Twist water bottle (seated on bottom of WITCHES' BREW™) COUNTER-CLOCKWISE to remove. See Fig. 2
4. Fill water bottle with clean, cool, room temperature water only. (Do not use oil/essential oil/fragrance/perfume.) See Fig. 3
5. Replace water bottle, twisting the bottle in a CLOCKWISE direction.  
**NOTE:** Make sure not to over-tighten the bottle.
6. Place switch (located on bottom of item) to the "ON" position. Wave your hand in front of WITCHES' BREW™ to activate the silly, spooky sequences.
7. To turn sound off, place microswitch below battery compartment to "OFF".  
**NOTE:** First fill of tank could take up to 2 minutes of use to start misting effect.

### FOR BEST RESULTS:

- Keep "function" switch in the "OFF" position when not in use.
- Place unit on place mat or towel if you are operating on a wood or easily damaged surface.
- Unit will stop misting when water level becomes too low.

## BOTTOM OF WITCHES BREW™

FIG. 1  
BATTERY  
COMPARTMENT

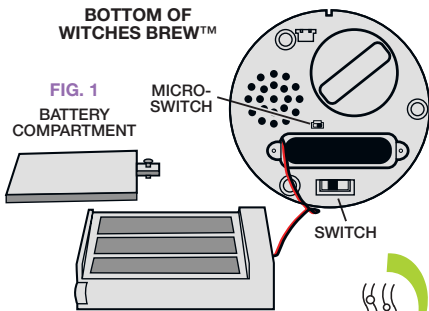


FIG. 2  
Turn  
handle  
counter-  
clockwise  
to access  
WATER  
BOTTLE.

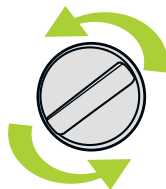


FIG. 3  
Fill  
WATER  
BOTTLE  
with  
clean  
water.



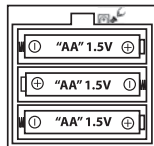
### ⚠ WARNING:

DO NOT USE OIL/ESSENTIAL OIL/FRAGRANCE/PERFUME.

**3AA** Batteries Required  
(not included)

## BATTERY INSTRUCTIONS AND CAUTIONS

- Battery installation and removal should be performed by an adult.
- Remove batteries when not in use.
- Use only batteries recommended in the instructions.
- Do not mix new and used batteries.
- Do not mix alkaline, carbon-zinc, nickel-cadmium, rechargeable or different types of batteries.
- Be mindful to insert batteries with the correct polarity (+/-) as indicated.
- Remove all exhausted batteries.
- Rechargeable batteries are only to be charged under adult supervision.
- Rechargeable batteries are to be removed from the item before being charged.
- Non-rechargeable batteries are not to be recharged.
- The supply terminals are not to be short-circuited.
- Always dispose of exhausted batteries properly.
- Do NOT dispose of batteries in fire, they may leak or explode.



### ⚠ WARNING! CHOKING HAZARD—Small Parts.

This item is not a toy. For decoration only.

This product is intended for use by persons 15 years of age and older.  
Not intended for use by children 14 years of age and younger.

Water capacity: 48 ml (1.62 fl oz)

INDOOR USE. SURFACE WASHABLE ONLY. All new materials: plastic, metal.

**TekkyDesign.com**